



MONTHLY MEMBERSHIP PROGRESS REPORT

District 2 A1

Results as of: 5/31/2017

GMT: HAL GRIFFIN

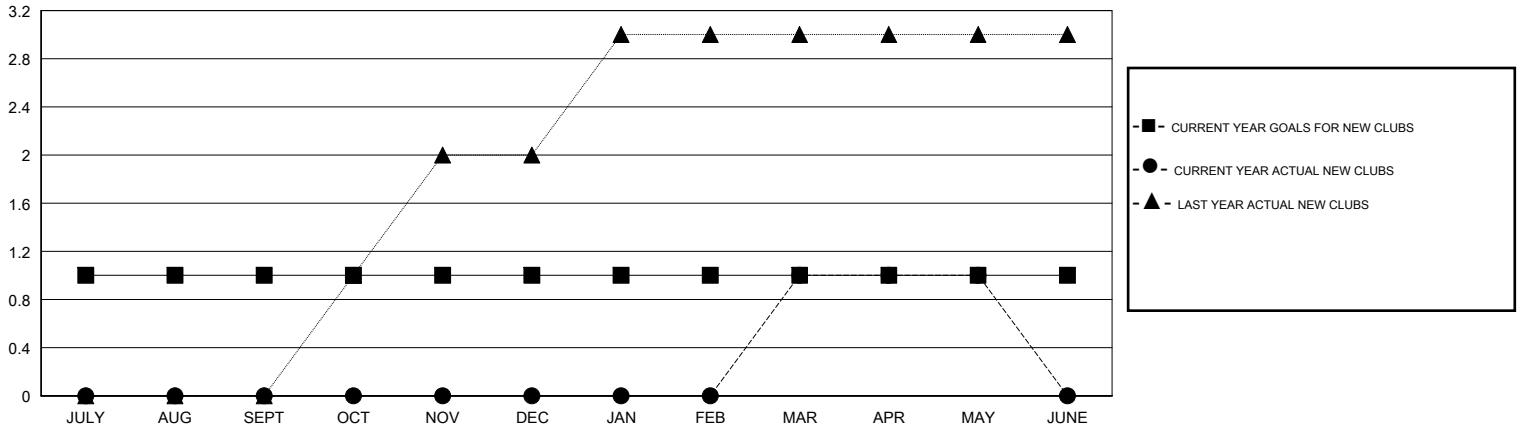
LOCATION TEXAS

GMT CA

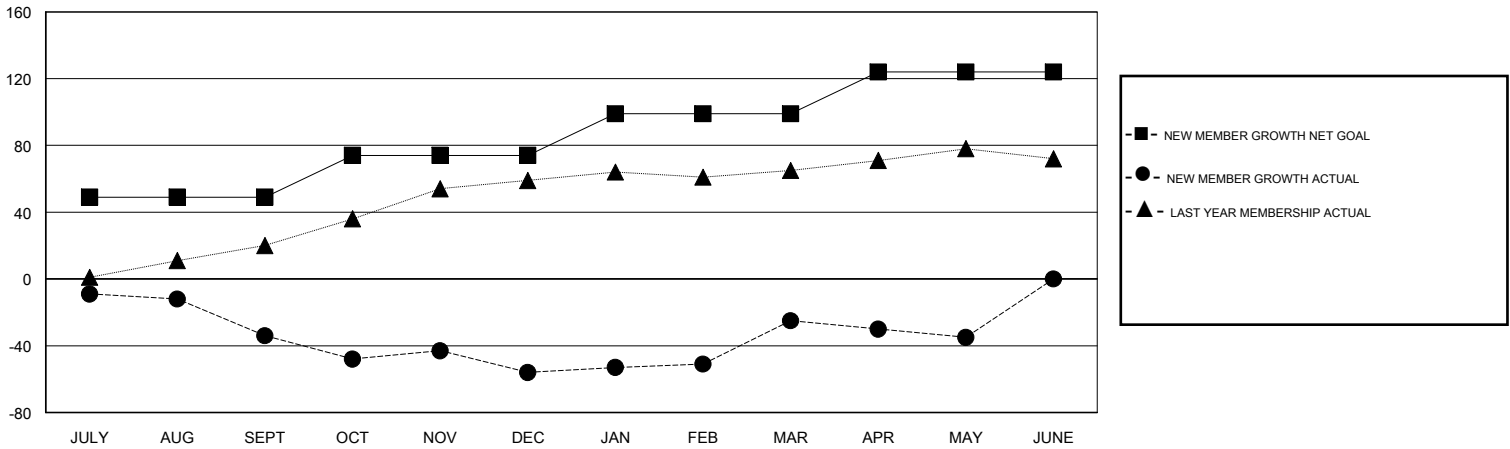
Clubs			
RESULTS FOR 2016-2017			
QUARTER	NEW CLUB GOAL	NEW CLUBS	DROPPED CLUBS
JULY/AUG/SEPT	1	0	0
OCT/NOV/DEC	0	0	1
JAN/FEB/MAR	0	1	0
APR/MAY/JUNE	0	0	0

Members			
RESULTS FOR 2016-2017			
QUARTER	NEW MEMBER GROWTH NET GOAL (not reinstated or transfers)	NEW MEMBER GROWTH ACTUAL (not reinstated or transfers)	DROPPED MEMBERS ACTUAL (including transfers)
JULY/AUG/SEPT	49	48	82
OCT/NOV/DEC	25	30	52
JAN/FEB/MAR	25	81	50
APR/MAY/JUNE	25	21	31

GOALS AND ACTUAL NEW CLUBS CUMULATIVE



GOALS AND ACTUAL MEMBERS CUMULATIVE



DROPPED CLUBS: 1	39 CLUBS OF 50 ADDED 1 OR MORE NEW MEMBERS	<u>GENDER DISTRIBUTION</u>	
DROPPED MEMBERS		MALE	911 (69.54%)
DECEASED	15	FEMALE	399 (30.46%)
CLUB CANCELLED	13	TOTAL FAMILY UNIT MEMBERS	
OTHER	187	178	
TOTAL	215	FAMILY MEMBERS PAYING HALF DUES	
		91	

[CLICK HERE FOR CUMULATIVE MEMBERSHIP DATA](#)